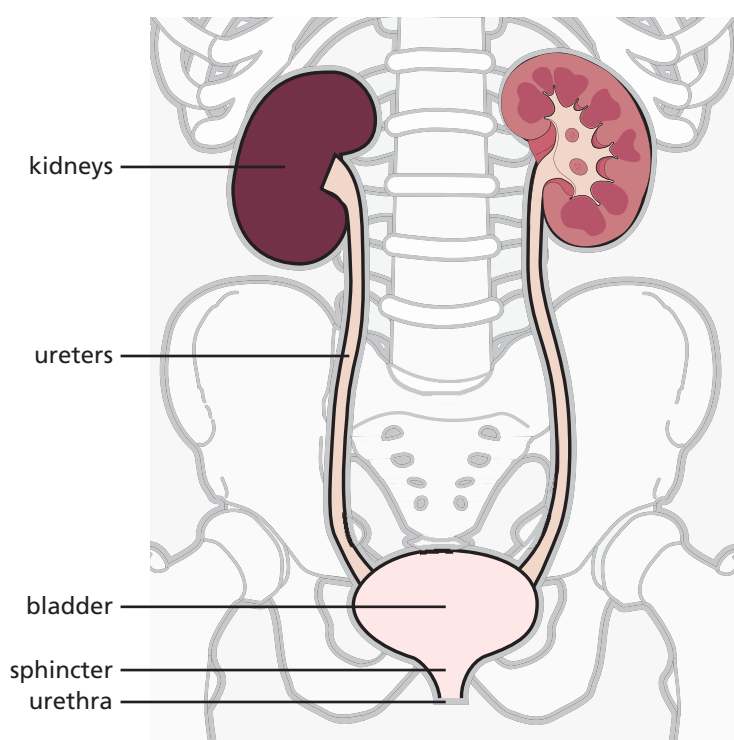




Clean intermittent catheterisation

This information sheet from Great Ormond Street Hospital explains about clean intermittent catheterisation, when it is needed and how to do it.



(thin, plastic tube) through the urethra into the bladder. Good hygiene is extremely important in clean intermittent catheterisation as it reduces the risk of developing a bladder infection, which is unpleasant and can sometimes lead to more widespread infection.

Why might my child need it?

Children who have spinal problems, such as spina bifida or a spinal cord injury, may find it more convenient to use clean intermittent catheterisation. It is also suggested if a child has trouble emptying their bladder completely – leaving a small amount of urine behind in the bladder can increase the risk of infection. Children who are wet (incontinent) can also benefit from clean intermittent catheterisation as it will increase the amount of time they can stay dry during the day.

How does the urinary system work?

The urinary system consists of the kidneys, the bladder, the ureters and the urethra. The kidneys filter the blood to remove waste products and form urine. The urine flows from the kidneys, down through the ureters to the bladder. From here it passes through another tube called the urethra to the outside when urinating (weeing).

What is clean intermittent catheterisation?

Clean intermittent catheterisation is a way of emptying the bladder of urine if weeing is difficult or impossible. It involves passing a catheter

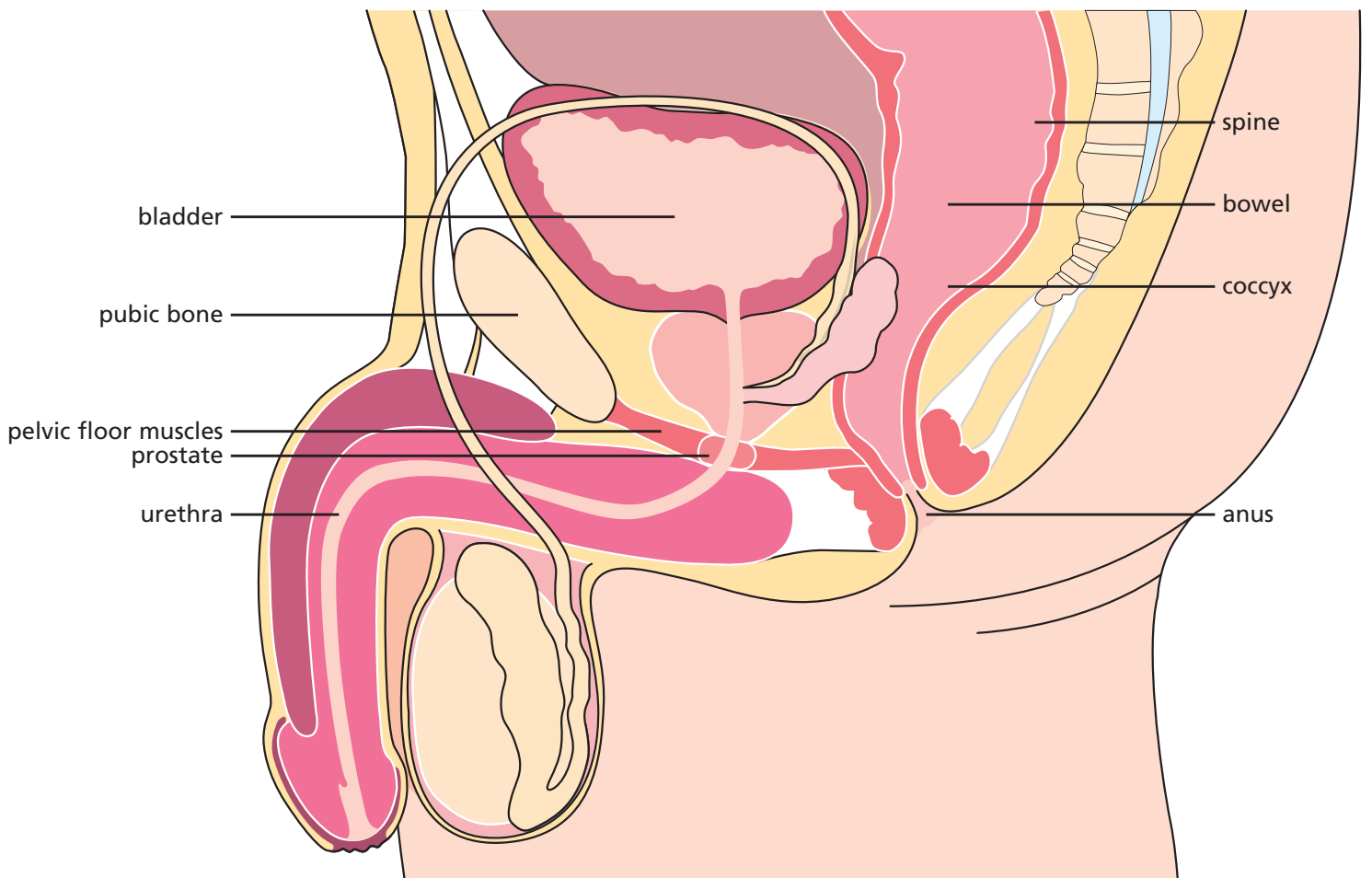
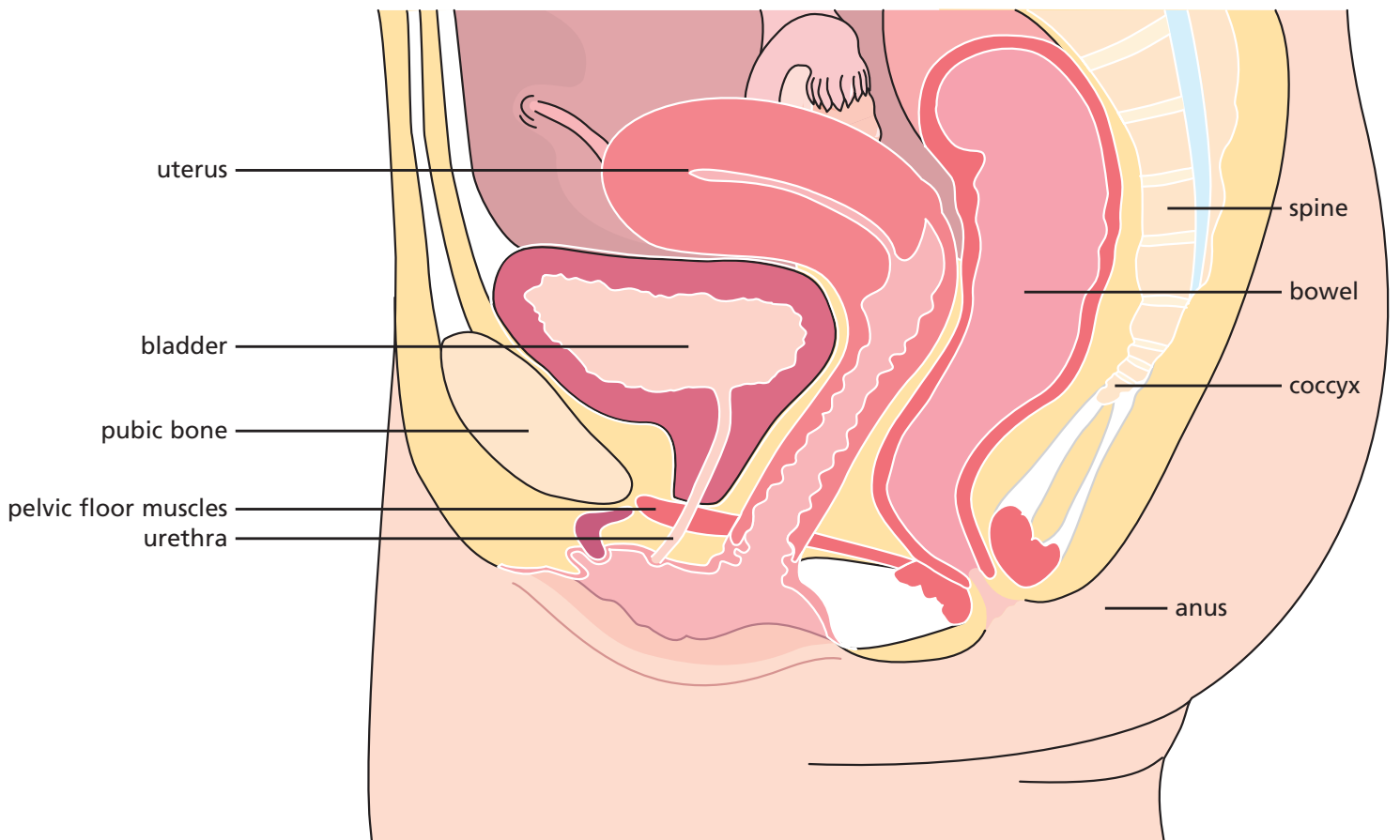
Equipment

You will need:

- Catheters
- Disposable wipes
- Water-based lubricant (if required)
- Container for collecting urine (if not using a toilet)

Catheters can be pre-lubricated (coated with lubricating gel), self-lubricated (they become slippery when soaked in water) or non-lubricated. Please discuss which type suits your child best with your clinical nurse specialist.

Catheters are usually supplied by a home care company so remember to re-order new supplies in plenty of time. If you have any problems getting hold of supplies, please tell us.



Most catheters are disposable 'single use' catheters. Please do not re-use single use catheters as it can increase the risk of infection. Used catheters can be disposed of in your household rubbish.

If you are going abroad on holiday, it can be helpful to carry a letter from your child's consultant explaining why you are carrying catheters. Remember to keep a few days' supply in your hand luggage just in case your suitcases go astray.

Instructions

1. Collect all the equipment needed
2. Wash your hands with soap and water
3. Get your child into a comfortable position
 - Sitting on the toilet
 - Lying on their back
 - Sitting in their wheelchair
4. Clean your child's genital area
 - **Girls** – clean the outside area first, then part their labia to clean thoroughly from front to back
 - **Boys** – clean the tip of the penis using an inwards circular motion towards the urethra, gently pulling back their foreskin to clean underneath
5. Wash your hands again with soap and water
6. Open the catheter packaging – avoid touching the end of the catheter
7. Add a small amount of lubricant to the outside surface of the catheter (unless it is a lubricated type)
8. Gently insert the tip of the catheter into the urethra
9. Use gentle pressure to pass the catheter through the sphincter (ring of muscle) at the neck of the bladder
10. Continue to insert the catheter into the bladder until urine starts to flow
11. Hold the other end of the catheter over the container or toilet
12. Keep the catheter in place until the flow of urine stops
13. Slowly remove the catheter, pausing if urine starts to flow again
14. Dispose of the catheter as instructed
15. Wash your hands again with soap and water

Trouble shooting

Problem	What to do
Cloudy or smelly urine	<p>This may be a sign of infection</p> <ul style="list-style-type: none"> ■ Take a sample of urine using the catheter and take it to your family doctor (GP) for testing ■ A course of antibiotics may be needed ■ Drinking plenty of fluids will also help
Pain when inserting the catheter	<p>This usually improves in time</p> <ul style="list-style-type: none"> ■ If pain continues, talk to your clinical nurse specialist
Blood in the urine	<p>This may be a sign of infection</p> <ul style="list-style-type: none"> ■ Take a sample of urine using the catheter and take to your family doctor (GP) for testing ■ A course of antibiotics may be needed ■ Drinking plenty of fluids will also help <p>It may also be a sign of bladder irritation</p> <ul style="list-style-type: none"> ■ If it does not improve in a few days, talk to your clinical nurse specialist

If you have any questions, please call the hospital on 020 7405 9200 and ask for the ward from which your child was discharged